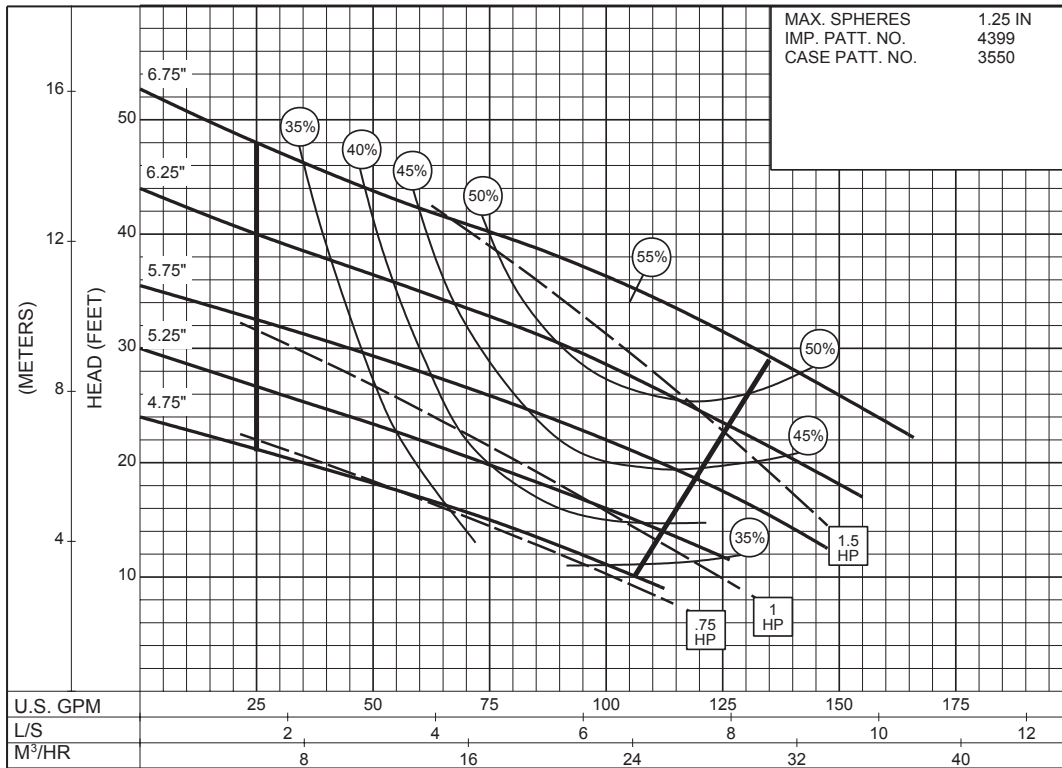


2 x 2 x 7 SERIES 640

ENCLOSED IMPELLER

SIZE : 2x2x7 TYPE : 640 IMPELLER : Enclosed R. P. M. : 1750

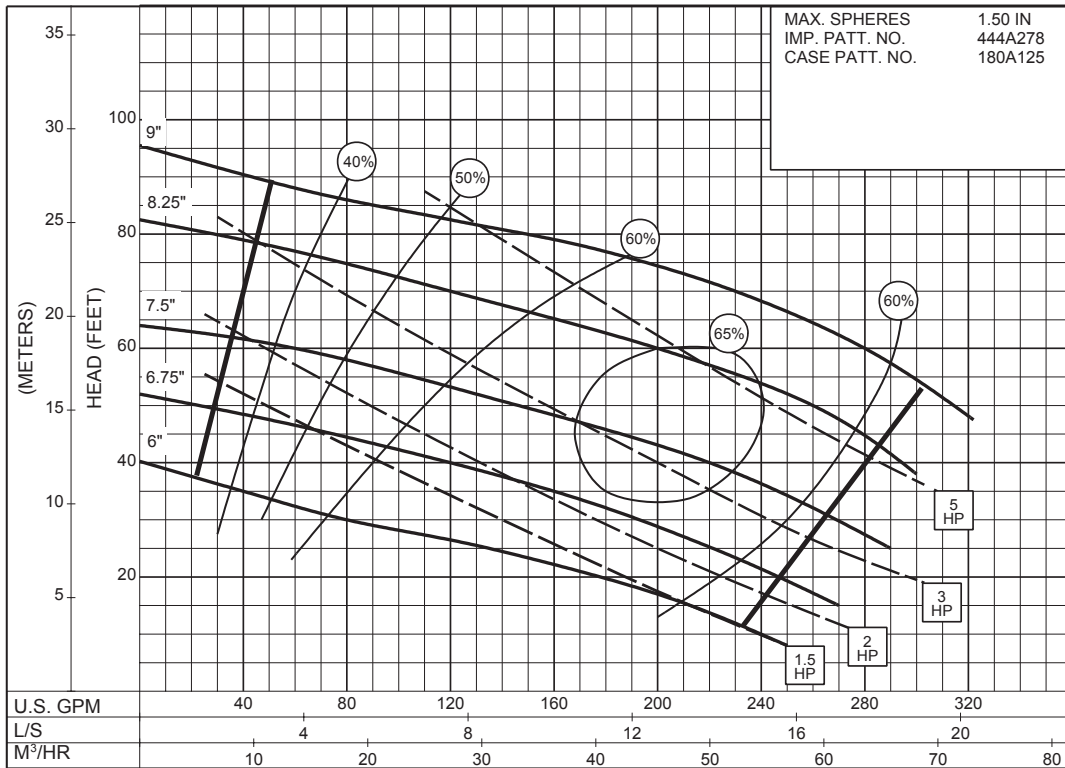


1750
RPM

2 x 2 x 9
SERIES 640

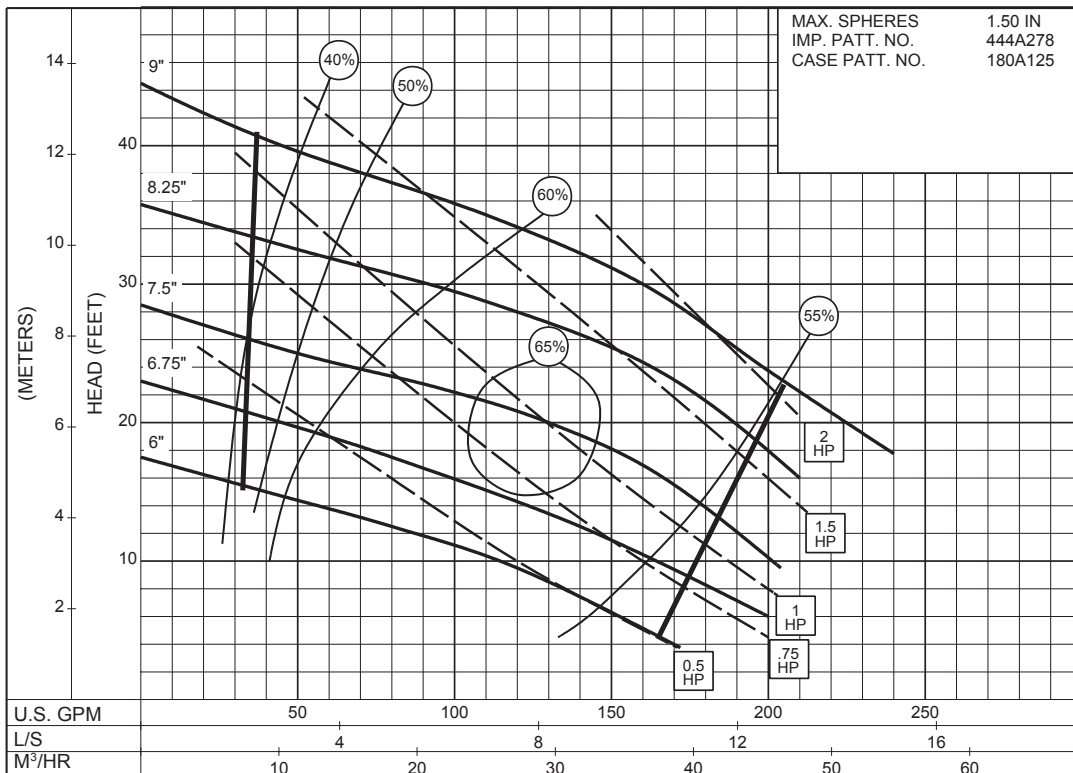
ENCLOSED IMPELLER

SIZE : 2x2x9 TYPE : 640 IMPELLER : Enclosed R. P. M. : 1750



1750
RPM

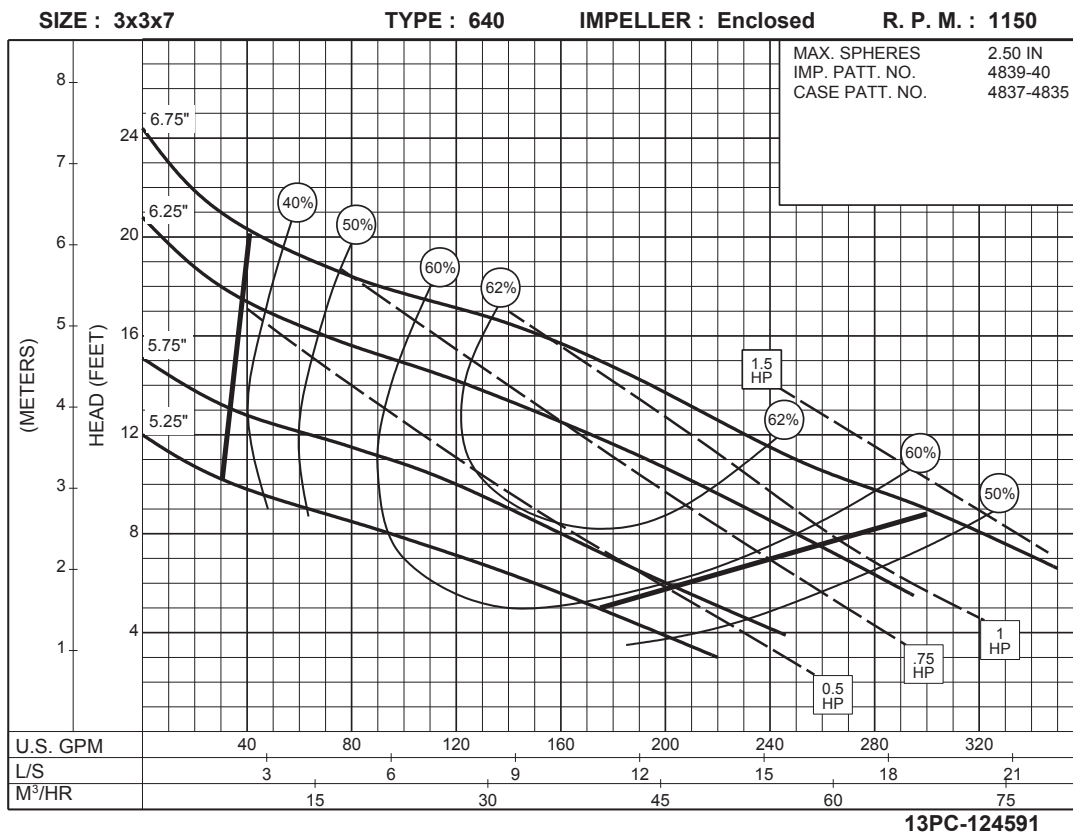
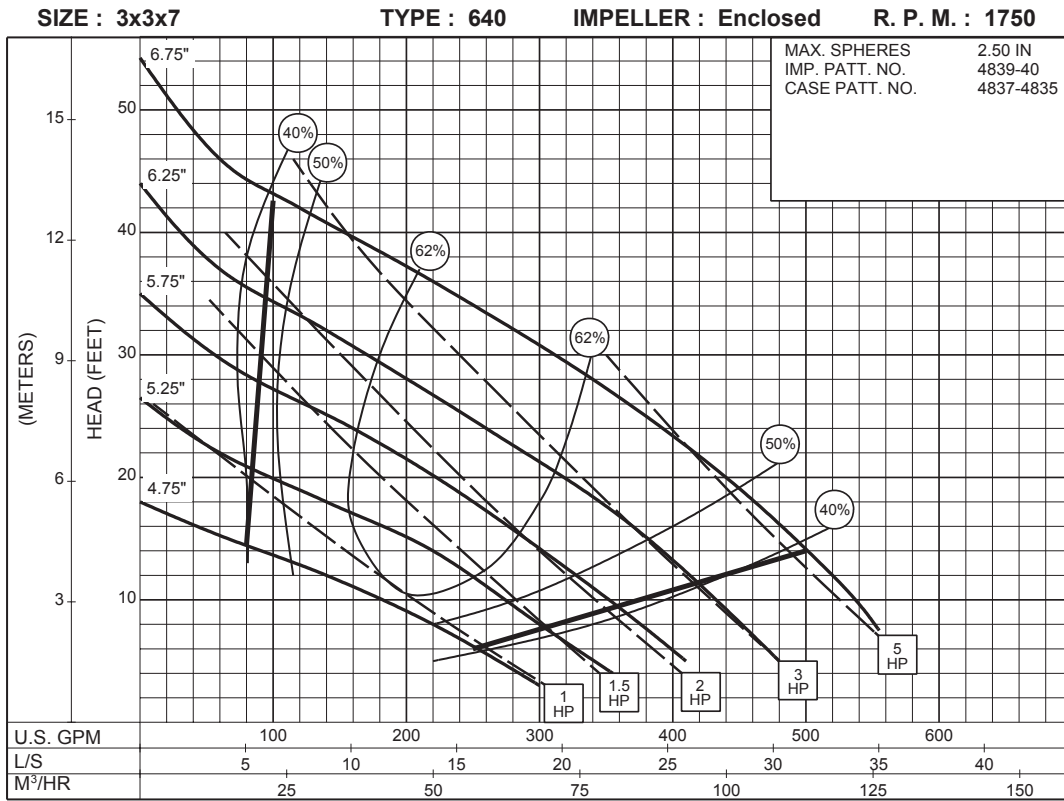
SIZE : 2x2x9 TYPE : 640 IMPELLER : Enclosed R. P. M. : 1150



1150
RPM

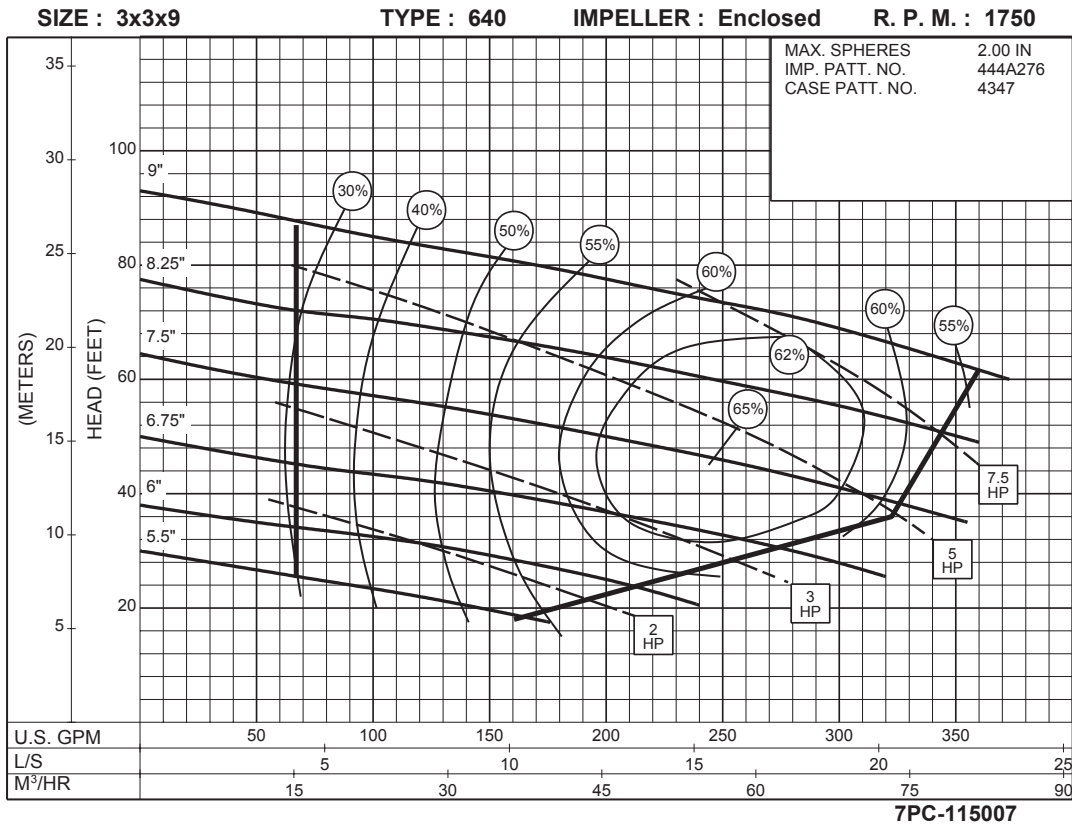
3 x 3 x 7 SERIES 640

ENCLOSED IMPELLER

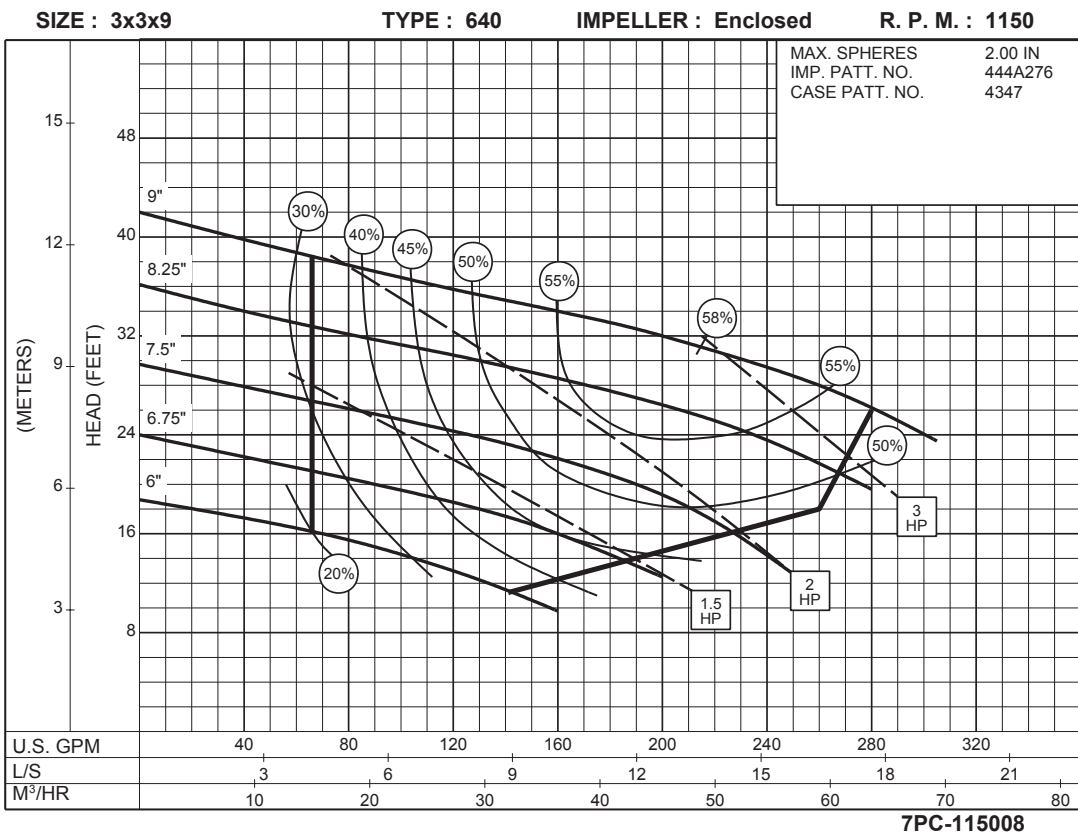


3 x 3 x 9 SERIES 640

SEMI-OPEN IMPELLER



1750
RPM



1150
RPM